

# Ludlow Heritage News

## No. 2 September 1984

10p

Published twice a year by Ludlow Civic Society  
and Ludlow Historical Group.



The repainted Ludlow coat of arms on Hosyer's Almshouses

### HOSYER'S ALMSHOUSES

The renovation of Hosyer's Almshouses over the past three years has converted its rather dingy accommodation into highly desirable self-contained residences for elderly people, and has also given a much-needed facelift to one of the most interesting buildings in the centre of Ludlow. The Civic Society, in co-operation with the Trustees, has been able to make a significant contribution to improving the appearance of the almshouse buildings.

Hosyer's Almshouses were founded by a wealthy Ludlow merchant, John Hosyer, in 1486. They were administered by the Palmers' Guild, and passed into the hands of the Corporation with the rest of the Guild property in 1551. After various legal battles in the last century, the management of the King Edward VI Charities, as they became known, passed into the hands of an independent body of Trustees which is still responsible for its affairs.

It had become increasingly obvious to the Trustees that the almshouse buildings, which had been reconstructed in 1756 to the designs of the noted Shrewsbury architect, T. F. Pritchard, no longer provided the type of accommodation which was suited to present-day needs, and the aid of the Housing Corporation was sought for a scheme to convert the building into a number of self-contained units. Mr. Stanley Catterall of Shrewsbury, an architect with wide experience in almshouse and conservation work, was engaged by the Trustees, and the contract for the building works was awarded to the local firm of Hughes and Powell.

Although the Trustees were concerned that the appearance of the building should be improved, there was little money available for works of a purely 'cosmetic' nature which might add the finishing touches to the building, particularly the regilding of the foundation inscription and the

repainting of the Ludlow coat of arms. At this point the Civic Society stepped in with an offer to undertake this work, which was gratefully accepted by the Trustees.

Before the coat of arms could be repainted, it was necessary to repair the broken Prince of Wales' feathers with which it is surmounted. This skilled task was carried out for the Society by local stonemason Norman Griffin, who carefully matched his replacement to the original carving. The coat of arms was then repainted in correct heraldic colours by graphic artist Derek James, who lives immediately behind the almshouses in Church Street. Derek has done other gilding work for the Society at St. Leonard's in Corve Street, and he was also asked to gild the lettering of the Latin inscription below the Ludlow arms.

This inscription is often a source of puzzlement to tourists, and it was felt that a translation ought to be provided. Accordingly, the services of Michael Faraday, an expatriate Ludlovian and historian of great repute, were called in, and the rather crude eighteenth century Latin of the original was transformed into intelligible and literate English. The Society's President, Mr. John Godrich, generously undertook at his own cost to have the translation engraved in copper, and it is hoped that by the time this appears in print the translation will have been mounted on a sandstone block near the almshouse entrance.

As a final touch, the Society engaged Norman Griffin to produce a new name plate, engraved on slate, for the main entrance, and also arranged for a light to be placed in the niche above the main doorway.

The Civic Society was able to assist the Trustees in this work by using some of the interest which it receives annually on the generous endowment it was given when the Ludlow Housing Association was wound up. It is gratifying to be able to make positive contributions of this nature to the appearance of our town, and these projects underline the vital message that the work of an amenity group consists of far more than objecting to developments. A good amenity society should always be looking for positive ways to enhance the environment it seeks to protect.

Martin Speight.

## LUDLOW HISTORICAL RESEARCH GROUP

The winter session begins on Friday, 28th September. Meetings are held weekly at the Further Education Centre in Lower Galdeford (second hut from the street), on Friday evenings from 7.30 p.m. £1.50 subscription per term to cover hire of room and other expenses. New members very welcome, as there are research tasks available for all levels of experience.

Further details from the Secretary, Mrs. Margaret Shaw, Cliffdene, Dinham, Ludlow SY8 2JE (Tel. 0584 2850).

## BIRMINGHAM UNIVERSITY EXTRA-MURAL AND SHROPSHIRE EDUCATION COMMITTEE CLASSES, 1984-85

*Ludlow under the Tudors, 1485-1603.* Tuesday evenings from Tuesday, 25th September. First meeting at the Lady Dyer Room, Ludlow College (Castle Square), 7.30 pm.

*The History of Cleobury Mortimer.* Research class at the Methodist Hall, Cleobury Mortimer, on alternate Wednesday evenings, 7.30 p.m., from 26th September.

*The History of Richards Castle.* Research class at the village hall, Richards Castle, on alternate Wednesday evenings, 7.30 p.m., from 3rd October. Open evening to exhibit previous work at the village hall, Wednesday, 19th September, 7.30 p.m.

## LUDLOW CIVIC SOCIETY

Winter Programme 1984-1985

Wednesday 10th October – An Evening with the Bewdley Historical Group.

Wednesday 7th November – Mr. J. Tonkin – Recent Discoveries in Vernacular Architecture.

Wednesday 12th December – An Evening with Harry Baker.

Wednesday 13th February – Dr. M. Speight – Churches before the Conquest.

Wednesday 13th March – Mr. D. Hewitt – A Moated Site in South Shropshire.

Wednesday 22nd May – Annual General Meeting.

All Meetings are held at The Feathers Hotel at 7.30 pm, except 10th October meeting, which will be held at The Nelson Room, The Angel Hotel.

Anyone wishing to join the Society should contact The Secretary, Mr. Ran Ogston, 1 The Vineyard, Ludlow. Telephone Ludlow 4718.

## RECENT PUBLICATIONS ON LUDLOW

David Lloyd and Peter Klein, *Ludlow: A Historic Town in Pictures and Words* (Phillimore, 1984); 144 pages, £6.95. The first of three publications on Ludlow by Phillimore. The book presents Ludlow as seen by writers and artists from the 12th to the 20th centuries. A reviewer for *The Birmingham Post* has declared: 'The book is aimed at the student of local history and the general reader as well. Two very different targets have seldom been hit so truly with one shot.'

David Lloyd, Rosemary King and Maureen Sykes, *Ludlow Festival: the First Twenty-Five Years* (Ludlow Festival Council, 1984); 48 pages, £1.50. A lively and carefully researched account with many illustrations, three of them in colour.

Robert Kirk, *The Shropshire Way* (Robert Kirk, 1983); 104 pages, £2.75. A walker's guide to a 172 miles long route round Shropshire. Brief references to Ludlow.

*South Shropshire Hills and Dales* (South Shropshire District Council, 1984); mini-guide, 20p.

Elizabeth Ratcliff, *A Country Parish: Neen Savage in 1981* (Countryside Publications, 1984); 112 pages, £5.25. Photographs of houses in the parish with their recent history. The result of a project by the Shropshire Federation of Women's Institutes.

## 20th CENTURY LUDLOW

Two major considerations arose in dealing with the traffic plan:

- a) to minimise through traffic on the A49 (achieved by the by-pass) and
- b) to resolve conflicts between internal traffic movement, amenity conservation, car parking, and pedestrians. This consideration led to the plan for an Inner Relief Road.

The first option was a comprehensive relief scheme – which the Civic Society did not endorse. The second, was to build part of the major scheme known as the Station Drive Link. The third, was to safeguard the proposed route by planning control and to leave any road building in abeyance.

As the Upper Galdeford area had to be cleared for redevelopment, it was accepted that development proposals there should incorporate the first phase of the Station Drive Link. This has been done. The scheme will provide access to a new car park, enable the town bus service to be re-routed, and possibly reduce traffic flow on the A49. It will not, however, resolve all the town's traffic problems.

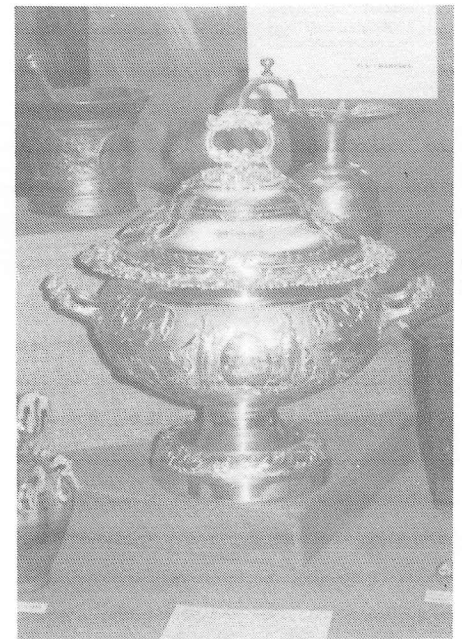
Ellis Shaw.

## THE CHARLTON VASE

During the eighteenth century the Clive family had managed to gain a virtual monopoly over the two seats in Parliament for the Borough of Ludlow, and the town and its Corporation had effectively become a 'pocket borough' of the Clives and their nominees.

For nearly a century there were no contested elections for the Borough M.P.s, and when in 1826 a challenge was mounted by Charlton, only 16 votes were polled.

Edmund Lechmere Charlton, a political maverick in the town, challenged the result, alleging that the vote should have been the right of all male householders in Ludlow and not just the Corporation. At his own cost he undertook a series of Quo Warranto actions in the Court of King's Bench challenging the right of various members of the Clive party to vote. Though he lost his case, the anti-Clive supporters showed their gratitude by presenting him with this piece of plate. Imagine their anger when in 1830 he became reconciled for a short time with the Clives!



When the Charlton Vase was put up for sale at Sothebys in London it was considered prudent that if possible it should be bought and brought back to Ludlow.

Accordingly, I was asked to attend the auction and to buy the Vase. Unfortunately, there was fierce competition from a foreign buyer and I was forced to exceed the £3,000 limit given to me.

The Vase was eventually bought with the assistance of the Civic Society and others, and presented to the Museum where it now resides for the people of Ludlow and others to see.

JOHN GODRICH  
President, Ludlow Civic Society

## CHILDREN'S WORK

The Summer Term project for St. Laurence's C. of E. Infant School, Ludlow, has been on Ludlow and its buildings – the aim being to make the children more aware of the town in which they live and the beauty of its historic buildings.

From talks by the headmistress, Mrs Wilding, and the class teachers, Mrs Gough, Mrs Dalton and Miss Robinson, the children learnt about the main phases of Ludlow's history.

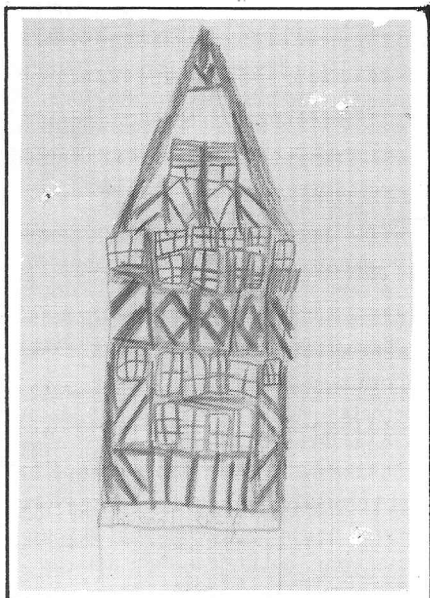
As can be seen from the extracts of written work, a wide range of subjects has been studied. For the sake of authenticity, the children's spelling and punctuation has not been altered.

Each child went in a small group to visit and record a variety of special buildings.

When this work was displayed in the school hall, I realised what a high standard had been produced and felt that the efforts of the children (and staff) deserved wider recognition. The children have copied the buildings with impressive accuracy of detail.

The project has not only taught the children – and their parents – a great deal, but has also given them an appreciative awareness of their town. An awareness which will hopefully grow as they grow. A thing to be valued and encouraged when we remember that our heritage will be in their hands.

Margaret Shaw.



The Wool Shop  
Stephen Cotterill

Ludlow is a very old town. Ludlow means by fast water and by a hill then the normans came and built the castle but it is ruined now and nobody lives there a king lived there once.

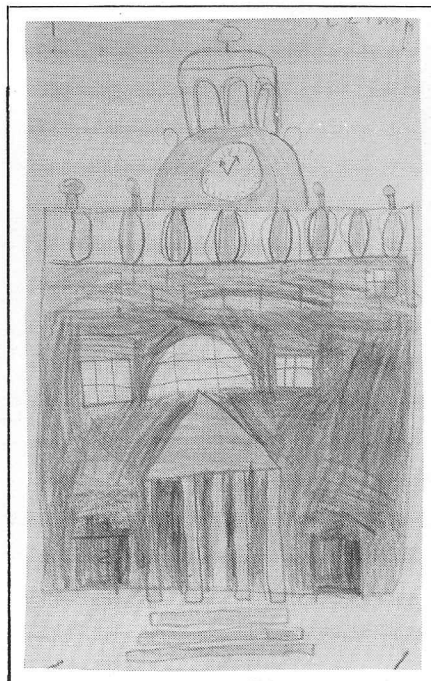
Jenny Senior.

I went up to town on wensday and I did a picture of the wool shop and it was very hard to draw the wool shop and the wool shop is a timber framed shop it is very old and it had diamond shapes on the front and it also had zig zaggy shapes on it and once the wood was brown and new the shop is old the wood turned black The wool shop has three floors in it and the window frames are very small

Natalie Davies.

There is a museum in Ludlow and the first time I went to the museum I saw some old toys and an old lady in a rocking chair and the children had a train a doll. The train was wooden.

Natalie Davies



The Buttercross  
Stephen Cox

In the olden days they had lots of punishments. they had things called the stocks. People sat down and had their feet were put through the holes. then they put a bar over their legs. People threw things at them. if they were very very naughty they were put in prison.

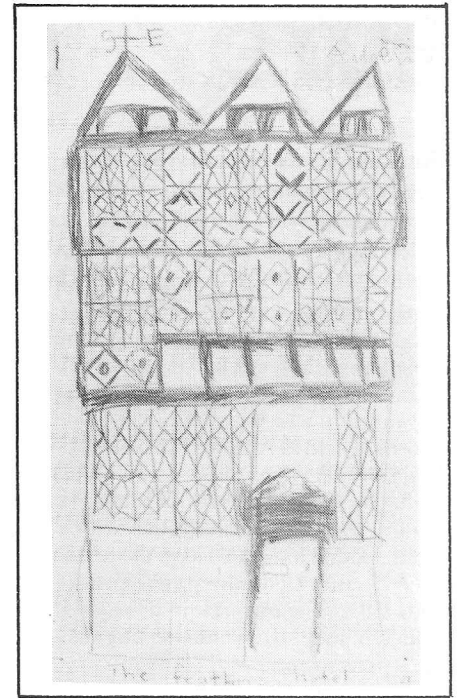
Eugenie King.

the Fair has been coming to Ludlow for lots of years. It used to be a sort of market but now it is more fun.

Eugenie King.

There is house called the Tolsey. There was a pump outside the Tolsey to get water from. And at the Tolsey you had to pay to get into the town. it is by the bull ring

Alexander Glyn-Jones.



The Feathers  
Andrew Sampson

The church is called St. Laurence and the Normans built it and the church windows are stained and some of the stones are made of sand and it has a nice garden with flowers in it

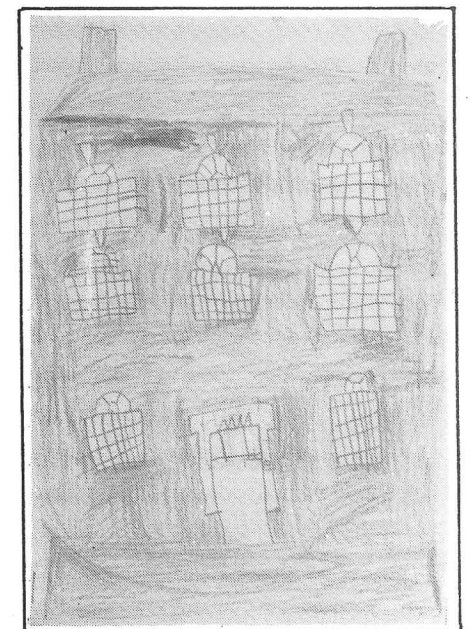
Charlotte Faulkner.

De Greys Cafe is old and there is a shop in De Greys Cafe and they sell buns and bread and cakes and sweets and in olden days the people used to wear long skirts and the floor slopes and there is a table that wobbles.

Charlotte Faulkner

This is a Georgian house and it has some bricks and the windows had round tops and it had a wooden door and the house is big and long

Daniel Humphries



39 Broad Street  
Oliver Sole

LUDLOW CARMELITE FRIARY  
DIG  
A PROGRESS REPORT

Since our first issue in May much has developed on the excavation site in Corve Street and, thanks to a generous response following our appeal for more funds, a further total of £1800 was raised both from further subscribers and from various fund-raising activities. The latter included a specially-prepared mediaeval banquet given by Dinham Weir Restaurant, which raised £75; a coffee morning held at Ashford Carbonel by Mrs Tucker-Bull which also raised £75; and a buffet meal at the house of Mr and Mrs Phillip Brazier which, together with a raffle, added almost £360 to the funds. The Finance Committee are especially grateful for their trouble and hospitality which helped so much in making these occasions so successful.

An Open Day, held at the site on June the 23rd, was very well attended despite indifferent weather during the afternoon; and attractions included site tours, an exhibition of finds, and refreshments which were kindly organised by Margaret Shaw. Finally, two generous cheques have been received; £150 from Keltcrest Ltd. of Tividale, and £500 from the Douglas Turner Trust.

The excavation has now revealed that the site is almost entirely occupied by the foundations of one substantial stone building, approximately 50 feet long by 38 feet wide, which is definitely part of the Friary but the purpose of which is at present uncertain. The footings are nearly four feet thick and are in places four feet deep, with the intact base of a large buttress in the north-western corner.

Between the eastern wall and the present street the footings of an earlier wall appeared, less substantial than the later, but clearly of another building since a layer of plaster is preserved on the western or inner face. It is now clear that this building was demolished to make way for the larger one, but the accurate dating of these structures will have to await pottery and possible radio-carbon analysis. Fragments of a tile floor and of what is possibly a hearth have survived in the narrow space between the earlier and later walls.

Much of the time so far has been spent in digging through the demolition layers from the period of the Dissolution and quantities of fragments of carved stone, some of fine quality, floor tiles, and pieces of stained glass with window leading have been found although probably coming from elsewhere on the site. Several silver coins including a half groat of Henry VII and a groat of Henry VIII have been recovered together with a few brass

jettons or counters of Nuremburg manufacture.

In the last few weeks considerable interest has centred on the discovery of the remains of at least five human skeletons in the north-western corner of the site, orientated with their feet to the east. These are likely therefore to be burials of laymen, possibly servants, rather than of friars and no grave goods have been so far found. It is thus probable that a small portion of the Carmelite burial-ground is incorporated in the site.



A volunteer, Simon Bean, cleaning one of the skeletons.

What has become plain is that this is a much more complex and interesting site than was at first anticipated and, due to pressure of other work, the Field Unit team will not be able to prolong the dig this year beyond the end of September. Rather than rushing through lower levels to gain incomplete information on 12th and 13th century occupation, it is now hoped that a further season of digging will be possible next year in order to give an important site the proper attention that it deserves.

Subscribers will be kept informed of events, and it is intended that an interim report will be sent out at the close of this year's digging. Would any subscribers who did not hear from us in June, before the Open Day, please either ring me (on Ludlow 2669) or leave a message at the site office as we may not have a note of your address if you paid your subscription direct into the bank.

Peter Klein.

MEDICINAL COMPOUNDS

The following medicinal prescriptions have been transcribed from a notebook of Sir Charles Fox of Bromfield (1545-1634) by Rita Storey, a member of the Historical Research Group. These recipes for good health obviously worked for Sir Charles who reached the grand age of 89 years. Readers who try them with profit are invited to communicate with the editors.

The shede of tansie dried & made in powder & drunke with Ale or Beure will destroy all kind of wormes in the bodie. the same shedes pund & after mingled with oyle will ease the paine & swelling of sinues. the Rotes of tansie preservid with honie & taken by them that are troubled with the gowt in their feete doth ease & help verie mutche.

Foxglove leaves or the flowers thereof Boylid in Water or wine & drunke doth kut & consume the thick toughness of grosse slimy humors allso it openith the stoppage of the liver & splene or mylte & other Inward partes. The same foxglove leaves taken in like manner or ells Boylid in honie water doth Scowre & Cleanse the breste & Ripeth & bringith forth towgh & slimie fleame.

The flowers & herbe of Camomill boylid in wine & drunk drivith forth windines & curith the Collick that ys to saye the paine in the bowells & bellie.

Penie Roiall Boylid in wine & drunke provokith urine, Breakith the stone espetially the stone of the kidneys. Penie Roiall taken with honie clenseth the longes & voydeth them & the breast from all grosse thick humors. the same taken with honie & aloes purgith by stole the melancoligne humors & prevailith much against croupes and the drawing together of sinues. penie Royall pund asswagith the paine of the gaute & Siatica being Rubbid upon the grevid place or part untill yt waxe Red.

Take Venice Turpentine & washe it in Roze water either Red or damaske untill it loke white then devid it into small Balles sutche as youe maye easily swallow to the quantitie of three hazel nuttes or thereabouts then Rowle them in sawow to make them the more easier to swallow then take them in the morning fasting and fast 4 howres after. Take teise thre or fower severall mornings together and in your water youe shal finde mutche gravell.

The Floweres & leaves of Coniza or Flebre boylid in wine & drunke are a verie good remedy against hott pisse, the stranngurie & the knawing or griping paines of the bellie & the Jaundis. the same taken with vinegar ys good against the Epilepsis or falling sickness.

Rita Storey